

# SHAYA

Compact HPL Application



**SHAYA CONTRACTING CO.**

[www.shayatrade.com](http://www.shayatrade.com)

ABOUT US	1
OUR MISSION	2
TOILET CUBICLES	3
TOILET CUBICLES (DOORS ONLY)	4
CUBICLES LAYOUT OPTIONS	5
HARDWARE	6
HPL LOCKERS	7
VANITIES, URINALS & KITCHEN CABINETS	8
LABORATORY FURNITURE	9
BENEFITS OF HPLS	10
COMPLETED PROJECTS	11
TRANSPORT & STORAGE	12
OUR ASSOCIATES	13

**Shaya Contracting Co.** is a well-established company in the market since 1991 offering total Walls and Floors covering solutions. We offer competitive pricing with utmost customer service. We already have established a wide spectrum of clientele that consists of major star Hotels, Banks, Hospitals, Airports, Corporate Offices, Auditoriums, Palaces, Commercial and Residential Properties, Government Institutions, Educational Institutions, Recreational Centers and many others. We aim at providing quality services and fulfilling the needs of for our valued customers.

The growing demand of High Pressure Laminates (HPL) finish products like Toilet partitions, Lockers, Vanities & Wall Cladding in the Middle East region encouraged to diversify. To offer the best finish products in (HPL). Toilet Partitions and other HPL products are most suitable for applications in Corporate Offices, Banks, Commercial Establishments, Airports, Hospitals, Universities and Schools, etc.



## رسالتنا

بواسطة البحث عن الخبرات العالمية والمحلية والبحث المستمر عن المعرفة وتحسين الذات ، نحن نركز على توفير نظام أبواب وقواطع دورات مياه و خزائن والذي يلبي المتطلبات المحلية ويزيد الإحساس الجمالي داخل المباني والإنشاءات الذي ينعكس مباشرة في منتجاتنا .  
التزامنا مع عملائنا يظهر بتطبيق أعلى الأخلاقيات المهنية والجهود التي لا تنتهي لتوفير أحدث المنتجات وأفضل الممارسات لأننا ندرك ان عملائنا هم شركاؤنا على المدى البعيد وهم الذين يدعمون رؤيتنا والمعيار الفعلي للنجاح

## Our Mission

By seeking the international and local expertise and the continuous search for knowledge and self-improvement, we are focusing on providing doors system and WCs' partitions and lockers which meet the local requirements and increase the sense of beauty inside the buildings and installations which will be directly focused in our products.

Our commitment with our clients is shown by applying the highest professional ethics and the endless efforts to provide the state of the art products and the best practices because we perceive that our clients are our long term partners who support our vision and the actual scale of success.



## TOILET CUBICLES

### Design:

Toilet Cubicles made of 13mm thick solid grade compact laminate panels (HPL panels). Panels are moisture resistant, rot-proof, scratch and impact resistant, and matt surface is easy to clean. Cubicles complete with stainless steel top rail and hardware.

### Construction:

- Door, Post and Divider panels in 13mm thick Solid Grade Compact Laminate.
- A horizontal top rail, manufactured using Grade A (Grade 316) Stainless Steel Tube.
- All mounting brackets are in Stainless Steel.
- Standard Size: Overall height 2000mm, width and depth according to layout, door opening 700 mm and bottom clearance of 150 (+/- 10 mm).
- Anti-noise buffer lining on post.
- Doors are flush integrated with post.

### Hardware:

All hardware in Stainless Steel, Grade 304 / 316

- Hinges: Self Closing Hinges with covers to conceal screw fixing.
- Privacy thumbturn lock with Red White Indicator and provision for emergency access.
- Standard door knob.
- Coat Hook with rubber buffer.
- Foot: Adjustable foot made of solid stainless steel cover rose.



## TOILET CUBICLE (DOOR ONLY)

### Design:

Toilet Door made of 13mm thick solid grade compact laminate panels (HPL panels). Panels are moisture resistant, rot-proof, scratch and impact resistant, and matt surface is easy to clean. Toilet Door complete with stainless steel hardware.

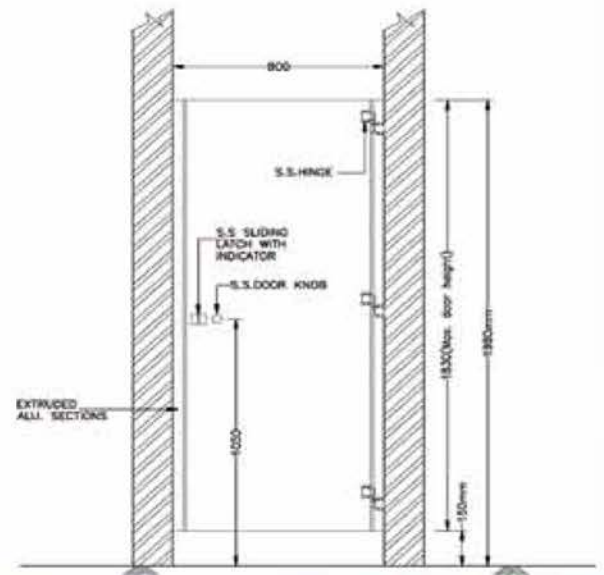
### Construction:

- Door in 13mm thick Solid grade compact laminate.
- Side Posts manufactured using high quality extruded aluminium section, polyester powder coated.
- Posts are wall mounted with concealed screw fixing.
- Standard Overall height 1980mm. Width according to layout, door opening 700 mm and bottom clearance of 150 (+/- 10 mm).
- Anti-noise EPDM buffer lining on post.
- Doors are flush integrated with post.

### Hardware:

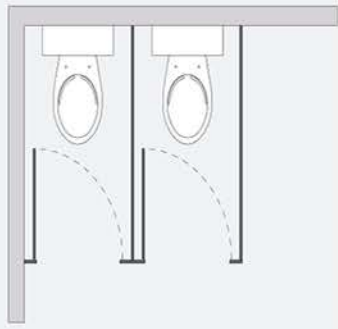
All hardware in Stainless Steel, Grade 304.

- Hinges: Self Closing Hinges adjustable to hold door in open or closed position.
- Privacy thumbturn lock with Red, White Indicator and provision for emergency access.
- Standard door knob.
- Coat Hook with rubber buffer.



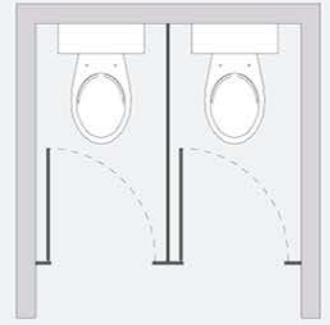
C/L

Corner Layout



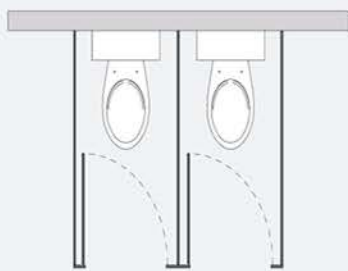
B/W

Between Walls



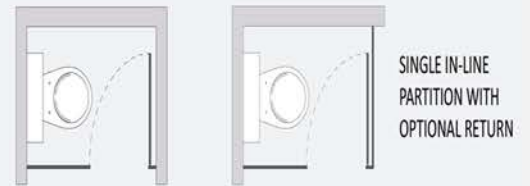
F/S

Free Standing



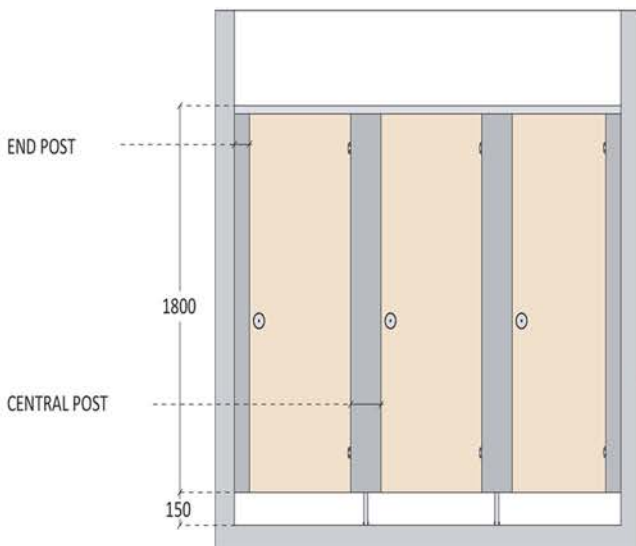
S/L

Single In-Line Partition



SINGLE IN-LINE  
PARTITION WITH  
OPTIONAL RETURN

Typical Front Elevation

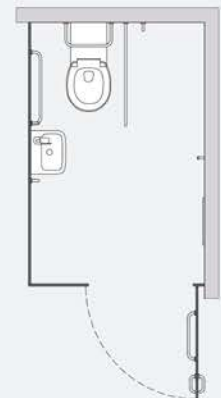


W/A

Wheelchair Accessible

DISABLED ACCESSIBLE WC CUBICLES ARE REQUIRED TO HAVE A MINIMUM WIDTH OF 1500mm AND A MINIMUM DEPTH OF 2200mm.

AN OUTWARD OPENING DOOR MUST BE FITTED, PROVIDING A 900mm WIDE OPENING.



STAINLESS STEEL HARDWARE



**HINGES**

Stainless steel self closing, spring hinges with covers to conceal screw fixing. They can be left or right handed according to conditions on site.



**ADJUSTABLE FOOT**

Floor fixing by means of adjustable foot made of solid stainless steel including cover rose. The adjustable foot is designed to suit condition on site and is especially resistant to corrosion in humid areas. It is supplied with stainless steel screws and plugs.



**PRIVACY THUMBTURN**

with red/white indicator and provision for emergency access.



**COAT HOOK CUM DOOR STOPPER**

Stainless steel coat hook with dual hanging option. The coat hook is also designed to work as a door stopper with a black rubber buffer.



**DOOR KNOB - PAIR**

Pair of solid stainless steel door knobs dia .30mm, with a no slip & easy grip design.



**BRACKETS**

The panels are fixed to the wall with stainless steel rounded right angle brackets.

NYLON HARDWARE



Adjustable Foot

Door Hinge

Coat Hook cum Door Stopper

Privacy Thumbturn

Door Knob-Pair





**SINGLE TIER**



**TWO TIER**



**THREE TIER**



**FOUR TIER**



**L SHAPED**



**LOCKERS WITH INTEGRATED BENCH**



**SHOE LOCKERS**





HPL Chemtop2™ is unrivalled in applications for high stress environments that require resistance to harsh chemicals. HPL Chemtop2 surfaces can be used for horizontal and vertical applications and, in conjunction with HPL laminates, offer versatility in design from work benches to fume cupboard walls.

## Advanced Chemical Resistance

Chemtop2™ technology features an advanced chemical resistant surface that is ideal for high stress environments, where relatively harsh acids, alkalis, corrosive salts and other destructive or staining substances are used.

## Cost-effective

Offered in 16mm and 19mm compact grade and in postforming grade laminate, Chemtop2 is easy to fabricate, extremely durable and requires little maintenance, resulting in exceptionally low life-cycle cost.

Environments and applications Formica Chemtop2 is the quality, versatile, reliable and cost-effective solution for critical working environments:

- Chemical, medical, scientific and pathogenic laboratories
- Photographic laboratories
- Clinics
- Nursing stations
- Commercial and light-duty manufacturing operations

Chemtop2 is intended for application to interior horizontal and vertical surfaces where resistance to relatively harsh acids, alkalis, corrosive salts and destructive or staining substances is required without compromising design or appearance. Whatever your application, Chemtop2 offers supreme performance, giving you confidence in your critical work surfaces:

Laboratory benches

- Counters
- Fume cupboards
- Cabinets
- Wall panels and splashbacks
- Screens

## BENEFITS OF HPL

**المتانة :** مقاومة عالية لعناصر البيئة ، الرطوبة و المناطق الرطبة. أدنى درجة لخسارة اللون قد تنتج عن التعرض الطويل الأمد للرطوبة.  
**Durability:** High resistance to environmental element, moisture and wet areas. Minimal loss of color in long term exposure to moisture.

**مقاومة الحريق :** تمتثل للمقياس الأوروبي لسلوك النار. Standard EN 13 501 classification B, S1-d0. لا تلين، تنفط أو تفرز الدخان السام.  
**Fire-resistance:** Meet European Fire Behavior Standard EN 13 501 classification B, S1-d0. Does not soften, drip or give off toxic smoke.

**التسطيح :** هيكلها المصفح يضمن تسطیح مستقر تحت أي تأثير خارجي من الحرارة أو الرطوبة.  
**Flatness:** Its laminate structure guarantees a stable flatness under any outside influence of heat or moisture.

**الرطوبة :** ليس هناك مشكلة مع التكثيف الداخلي أو إختراق الأمطار.  
**Humidity:** There is no problem with internal condensation or rain penetration.

**المقاومة للإحتكاك :** كمنتج مصفح، يمكن أن يتحمل من دون تغيير، الإحتكاك الصادر عن كجم 0.324 كرة صلبة من إرتفاع 1.5 متر وفي سرعة 6 متر/ الثانية (21.6 كم/ساعة) في لحظة الأصدام.  
**Impact Resistance:** As a laminate product, it can withstand, without change, the impact of a 42mm Ø 0.324 kg steel ball from a height of 1.5 meters at a velocity of 6 meter/second (21.6km/h) at the moment of impact.

**المقاومة الميكانيكية والكيميائية :** لم يطرأ أي تغيير أدنى 180° درجة مئوية.  
**Mechanical and chemical Resistance:** No change below 180°C.

**التنظيف الذاتي :** نظرا لسطحها غير المنفذ للسوائل و العازل للكهرباء ، الأوساخ لا تلتصق و الأمطار تلغي احتمال بقاء أي غبار.  
**Self-cleaning:** Due to its non-porous surface and its electrical insulation, dirt does not stick and rain eliminates any dust that may remain.

**مقاومة الإضمحلال :** حامل ، مادة غير قابلة للإختراق لعوامل الرطوبة، الإنحلال ولعفن.  
**Decay Resistant:** Insert, non-porous material resistant to the elements, moisture, decay and mold.

**إستقرار الألوان :** غير قابل للتغيير بفعل الأشعة فوق البنفسجية، لا تغير للون أو ظهور لتغير جزئي غريب للألوان.  
**Color Stability:** Unalterable by ultraviolet radiation. No color change or appearance of strange partial discolorations. Grade 4 [grey scale].

**معيار الإختبار :** يتمثل تماما بمقياس المنتج الأوروبي.  
**Standardized:** Fully meets European product standard.

**بيان بيئي :** شرائح الفور مايكا المضغوطة لا تحتوي على الأسبست أو مواد مضرّة لطبقة الأوزون. علاوة على ذلك، لا يحتوي تكوينها على أي معادن ثقيلة أو أصباغ، يمكن إعادة تدوير مخلفات هذا المنتج ولا تتطلب أي علاج خاص على مثال لمخلفات البناء الأخرى.

**Enviromental Statement:** High Pressure Compact Laminates do not contain asbestos or substances harmful to the ozone layer. Furthermore, their composition contains no heavy metals or pigments. Laminate remnants are recyclable and do not require any special treatment like other construction waste.

CMA Building, Olaya - Riyadh  
National Water Co. - Riyadh  
Shubra Mobily office - Riyadh  
Al Jaddan, Business Gate - Riyadh  
Phizer, Business Gate - Riyadh  
Ghosi Twin Towers - Olaya Riyadh  
Al Anood Tower - Riyadh  
Deanary Building Imam University - Riyadh  
Marco New Head Office- Riyadh  
Support Academic Area (Imam University - Riyadh)  
Faculty of Science College (Immam University - Riyadh)  
Faculty of Economics College (Immam University - Riyadh)  
Additional Lecture Hall (Immam University - Riyadh)  
Fire Stattion Bldg (Imam University- Riyadh)  
Health Care Building (Imam University- Riyadh)  
Makharim Hotel - Riyadh  
Marriott Executive Apartment - Riyadh  
Riyadh care hospital - Riyadh  
Shell New Office - Riyadh  
National Guard - Riyadh  
Wall Street Institute - Riyadh  
Arasco-Riyadh  
Gulf International Bank - Dammam  
Engineering College (Qassim University)  
Arabic & Shariya College (Qassim University)  
Student Dormitery stage 2 (Qassim University)  
Computer College Girls (Qassim University)  
Student Dormitery stage 3 (Qassim University)  
Dental College Phase 1 (Qassim University)  
Dental College Phase 2 (Qassim University)  
Faculty of Engineering & Science College (Qassim University)  
Transportation Building (Qassim University)  
King Abdul Aziz University - Jeddah  
IKEA - Riyadh  
Accenture - Al-Khobar

## Transport and Handling

Shaya Trading Compact Interior panels with care in order not to damage the edges and surfaces of the high-quality material. In spite of the excellent surface hardness and the in-stallation protection film, the stack weight of Compact Interior panels is a possible cause of damage. Therefore, any form of dirt or dust between the panels must definitely be avoided.

Shaya Trading Compact Interior panels must be secured against slippage during transport. When loading or un-loading, the panels must be lifted. Do not push or pull them over the edge.

**Transport protection films must always be removed from both sides at the same time.**

The transport protection film must not be exposed to heat or direct sunshine.

## Storage and Air Conditioning

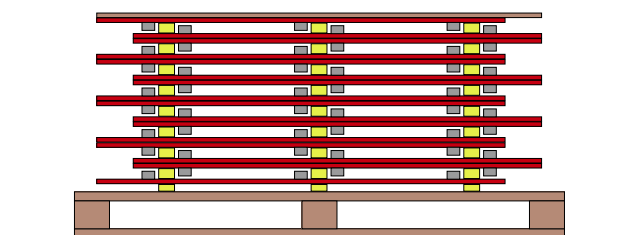
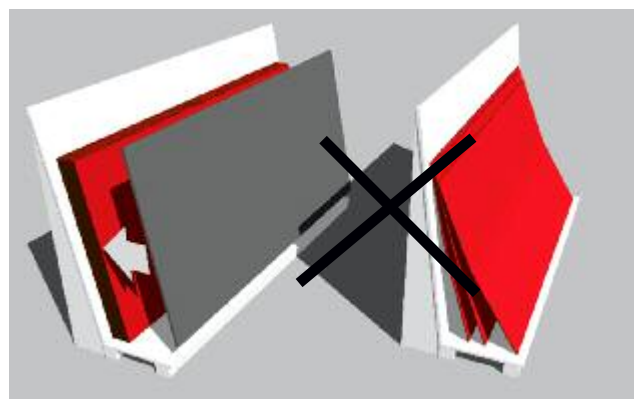
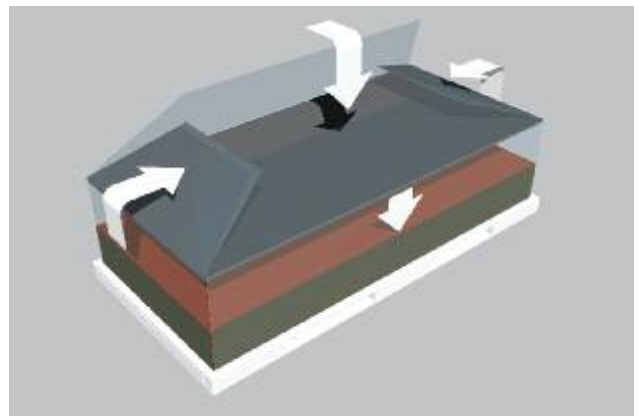
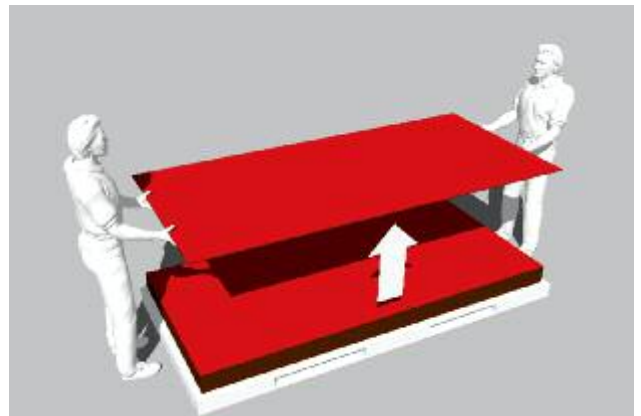
Panels must be stacked horizontally on flat, stable supports and supporting panels. The goods must lie completely flat.

Cover plates must always be left on the stack. The top cover should be weighted down.

After removal of panels, PE films must again be closed over the stack.

The same applies, in principle, for cut-panel stacks. Incorrect storage can lead to permanent deformation of the panels.

Shaya Trading Compact Interior panels are to be stored in closed rooms under normal climatic conditions. Climate differences on the two surfaces of a panel are to be avoided. With pre-installed fastening elements, therefore, care is to be taken that the climatic effect is uniform on all sides. Use intermediate layers of wood or plastic.



**VIRGO LAMINATES LTD.**



**VIRGO**<sup>®</sup>

**TO WHOM IT MAY CONCERN**

November 8, 2021

This is to inform that our company Virgo Laminates Ltd is a leading manufacturing company in the field of Interior and Exterior Laminate based in India.

Virgo Laminates Ltd products are available worldwide through a network of Authorized Distributors and partners dealing directly with us.

We have the pleasure in confirming SHAYA TRADING EST based in Saudi Arabia is our client and dealing directly with Virgo Laminates and they are receiving a full Technical Support.

Thanks & Regards.

Virgo Laminates Ltd.  
  
Authorised Signatory

**VIRGO LAMINATES LTD**

**Corporate Office:**

D-117, Okhla Industrial Area, Phase-1,  
New Delhi-110020. (INDIA)

T: +91 11 47422222

F: +91 11 47422299

E: delhi@virgolam.com

**Head Office:**

828, Industrial Area, Phase-2,  
Chandigarh-160002 (INDIA)

T: +91 172 2639222, 2639333, 4011111

F: +91 172 2639444

E: info@virgolam.com

**Works:**

Village Kuranwala,  
Barwala Road, Derabassi,  
Distt. Mohali- 140507 (Punjab)

T: +91 1762 506466

E: katyani@virgolam.com

CIN U20200DL1996PLC251265

[www.virgolam.com](http://www.virgolam.com)

[www.shayatrade.com](http://www.shayatrade.com)

## OUR OTHER RANGE OF PRODUCTS

# SHAYA

## WALL COVERING

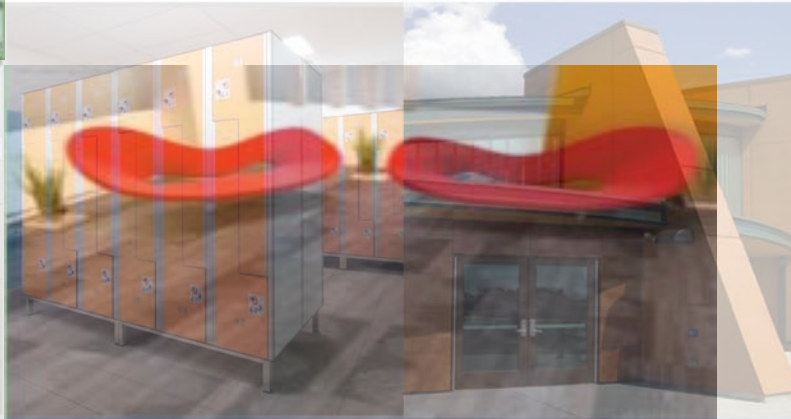
Compact HPL Application



## RAISED FLOORING SYSTEM



## CARPET TILES



## ARCHITECTURAL HARDWARE

## SHAYA CONTRACTING CO

Office: P.O. Box 18580 Riyadh 11425 - Kingdom of Saudi Arabia.

Telephone : 0114768309

Fax : 0112063960

Email : [info@shayatrade.com](mailto:info@shayatrade.com)

[www.shayatrade.com](http://www.shayatrade.com)